



**BUCHER  
ROAD SWEEPER**

**DAF XB 230 FA 4x2 BUCHER  
ROAD SWEEPER**



## Make / Model:

DAF XB 230 FA 4x2 16 Ton Road Sweeper Chassis

## Driveline:

Drive line is fitted with 6.7 litre, 6 cylinder diesel PX-7 Euro 6 engine:

- Outputs: 167 kW (227 hp) @ 1,900 rpm
- Max Torque: 890 Nm @ 1,000 to 1,700 rpm

Also features PowerLine 8-speed automatic override gearbox 8AP1000, ratio 4.89 – 0.64. Rear axle ratio 5.13.

Fitted with driven rear axle with a mechanical differential lock. The ASR (anti-slip regulation) system prevents the driven wheels from slipping when accelerating at driving off and helps the vehicle to remain stable on critical road surfaces.

## Cab External Features:

- Green translucent external visor.
- Daytime running lights
- Tinted glass.
- Passenger door lower window.
- Single glassed window in cab rear wall.
- Main, wide angle, kerb view, and front view mirrors. Main mirrors electrically adjusted.
- Electric operated side windows.
- 4-point mechanical cab suspension and integrated shock absorbers.
- Central door locking system with exterior light checker functions.



## Colour:

Cab finished in E1980WHITE White. Lower cab step, cab steps, and wings, as well as the headlamp panel and bumper are finished in stone grey. Chassis is also finished in grey.

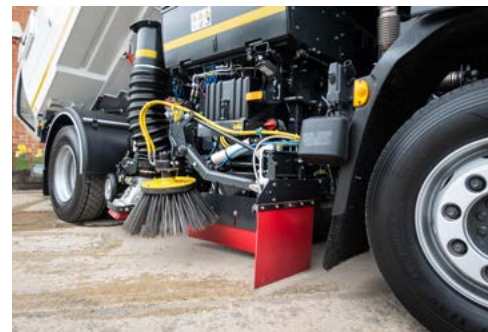
## Cab Interior:

Cab interior is finished with black rock and a dark sand trim. Air suspended driver and fixed passenger seat with integral head restraints and three-point black seat belts. Upholstery is flash copper with black seat belts. Adjustable steering wheel finished with leather in black colour.

Air-con can be manually controlled with air recirculation. Roof hatch with manual control. Cruise control. Cab also features a DAF Infotainment System - includes an FM/DAB/DAB+ radio integrated in the system as well as streaming functionalities via USB and Bluetooth.

There is a 5" TFT display in the instrument panel and driver performance assistant (DPA). Stoneridge or VDO tachograph. 24V to 12V, 15A, 180W converter.

Adaptive cruise control with forward collision warning and advanced emergency braking system to assist in avoiding or mitigating impact of impending collision.





## Chassis:

Chassis side member is 270 mm x 6 mm thick steel. EAS behind cab with vertical discharge. 115 litre plastic fuel tank in rear overhang and 20 litre AdBlue tank. Wheel base is 3,260 mm with 1,000 mm overhang. Mudguards have spray suppression. Front and rear underrun protection fitted. Rear lights LED.

## Braking System:

Exhaust brake. Function integration in the Electronic Brake System. If switched on with the steering wheel switch, the exhaust brake will operate on throttle release. Park brake control.

## Axles & Suspension:

Front Axles Type: F60. Parabolic leaf suspension with shock absorbers and stabiliser. Max. load 6.0 ton.

Single Reduction Driver Rear Axle Type: SR10.26 with asymmetric parabolic leaf suspension, including shock absorbers. Max load 10.5 ton.

## Wheels & Tyres:

Steel disc wheel rims in silver grey with wheel protection rings and centre section also silver grey.

Front & Rear Axles: 285/70R19.5 Tyre Size, 195 x 75 mm Wheel Rim Size. Tyres are premium make.



## Power Take Off (PTO):

Hardwired gearbox PTO control, no gearbox PTO. Includes a PTO switch on the dashboard and a PTO control valve on the chassis. PTO connector on the cab front bulkhead with input signals for PTO engagement or disengagement and signals for PTO status indication and PTO warning.

## Safety & Security

Lane Departure Warning System to prevent inadvertent lane changes due to driver's fatigue or distraction and to form an effective driving aid in low visibility conditions.

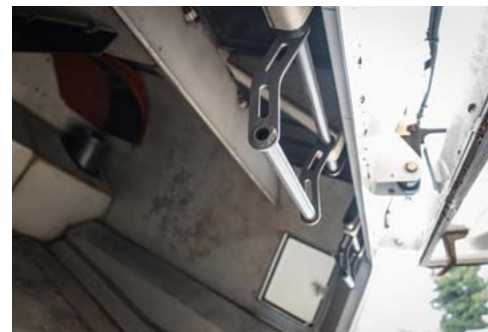
Electronic Vehicle Stability Control system (VSC) to enhance the active driving safety. Improved directional stability (understeer, oversteer jack-knifing) and additional roll-over safety.

Broadband reverse warning with self-adjusting volume. Basic engine immobiliser with fuel injection inhibit and interruption of the starter motor circuit. Manual main switch.

The vehicle supplied by DAF is compliant with UN Regulation R155 concerning cyber security management systems as well as UN Regulation R156 concerning software update management systems.

## Electrical Power Supply:

Alternator 80 A, 2 x 125 Ah batteries. In cab converter; 24V to 12V, 15A, 180W.





## GVC & GCM:

Chassis weight related technical GVM max. 16,000 kg

## Warranty:

1 year chassis cab with 2nd & 3rd year Driveline. This takes care of all warrantable repairs on the vehicle for the first two years and on the driveline for this year together with associated with breakdown coverage.

## Service & Maintenance:

Two options are available at additional monthly cost.

1. Compliance package.
2. Full R&M package, please ask for full details or a monthly cost.

**Please ask for full details and monthly costs.**



## Hopper:

The sweeper comes equipped with the VT652 dual sweep machine with twin engine power (VT) and single pump. The body has two sets of beacons, one rotating amber beacon on cab roof and two rotating amber beacons on rear of body. Fitted with JCB 55kW Ecomax 4.4 litre stage 3b engine.

The hopper is 4003 grade stainless steel with access doors on both side and rear discharge chute (4003 grade door). Cowl is constructed from mild steel. The hopper is capable of carrying 6.5 m<sup>3</sup> and 1554 litre of water in auxiliary fuel tank.

In Cab data capture, raised hopper warning system (audible and visual). Equipment fuel & water gauge, auxiliary engine hour counter & tachometer. Maximum payload indicator. Also includes 190 litre fuel tank with locking fuel cap. Work lamp to sweeping system. LED light in the systems wafer.

## Brushes & Nozzles:

It features dual intake flaps and 500 mm channel brushes with steel tines. The wide sweep brush is poly segment stock allowing for quick change over system. A maxi gap nozzle with fixed aperture positioning system included.



The nozzles has 250mm trunking as standard and specially profiled low noise nozzle rubbers whilst ensuring the best debris pickup in all applications. Channel brush long reach design gives better access into difficult areas, with a quick release system allowing rapid brush changeover, variable brush speed.

Supawash - High pressure washing system with hand lance slim hose reel, centre mounted spray bar and rear mounted nozzle spray bars.

Wanderhose - 15mm diameter top mounted suction hose with remote lubrication point.

Systems - IP 67 automotive waterproof electrical external connections. Press drain water purging system, pendant control for back door and body tip operation allowing operation in cab or externally. Twin door clamping system.

Dual sweep equipment with simultaneous sweep, left and right channel bushes working together.