



**KEL-BERG**  
**VACUUM TANKER**

**DAF XD 450 FAD 8x4 KEL-BERG**  
**NON-HAZARDOUS VACUUM TANKER**

## Make / Model:

DAF XD 450 FAX 8x2 Rigid Chassis

## Drive Line:

Fitted with 10.8 litre, multi-torque 6 cylinder Euro 6 MX-11 diesel engine.

- Outputs 330 kW (449 hp) at 1,600 rpm
- Maximum Torque 2,350 Nm at 900 - 1,125 rpm

Fitted with automatic direct drive TraXon 12 speed 12TX2210 overdrive gearbox, ASR (anti-slip regulation), Eco performance, rear driven axle mechanical differential lock. Engine idle shutdown after 5 minutes idle time.

- Gear ratio 16.69 - 1.00
- Traction aid 15.0 t
- Axle ratio 2.38

Automated gearbox software optimised for liquid transport.



## Cab External:

Cab external features the following items:

- New 2023 aerodynamic cab.
- DAF Digital Vision System - Foldable camera above cab doors with two displays mounted to inside cab.
- Midnight blue translucent external sun visor.
- Laminated double layer safety glass front windscreen.
- Double glazed window in cab rear wall.
- Passenger lower door window of tempered single layer safety glass.
- Cab entrance step with anti-slip tread. 3 steps.
- Central door locking system with light checker function. Includes 2 keys.
- Bi-reflector LED head lights with impact resistant Lexan lens.
- LED day time running lights integrated into headlight units.
- LED head and cornering lights.
- Maintenance free 4-point mechanical cab suspension with integrated shock absorbers.
- Air flow plate fitted under the vehicle improving fuel efficiency. Takes into account ground clearance.

## Colour:

Cab	E1980WHITE
Camera housing	Crystal White
Head lamp panel	Crystal White
Chassis	Grey
Bumper finished	Grey
Grille strips	Black



## Cab Interior:

Cab interior has hexagon decoration with light trim colour on roof and roof console. Panels and below dashboard are grey. Accents are facet black. The dashboard descends towards front windscreen to create more vision with plane finish. Dashboard has extractable table on top of centre console. Centre console has open storage compartment also. 2 x 12V/5A dashboard power supply and 3 USA-A connections.

Bunk has “Xtra Comfort” 150 mm thick pocket sprung mattress. There is a drawer for storage underneath the lower bunk with additional storage to left and right of the drawer, accessible with tilted bunk. Curtains along the windscreen and the side windows. There is an additional curtain between driving area and sleeping compartment.

Driver seat is air suspended, high backed, with armrests and black seat belts. Passenger seat is foldable. Pull down roller blind on driver side. Windows are electric. Interior lighting is LED with dimmable red night driving light and separate spot lights for driver and passenger. Equipped with cruise control. Fitted with leather steering wheel. Includes audible reverse warning system with override switch, and basic engine immobiliser.

Cab is climate control, regulating temperature, air distribution and air conditioning. Fitted with water-to-air 6kW cab and engine heater with residual head pump and timer.



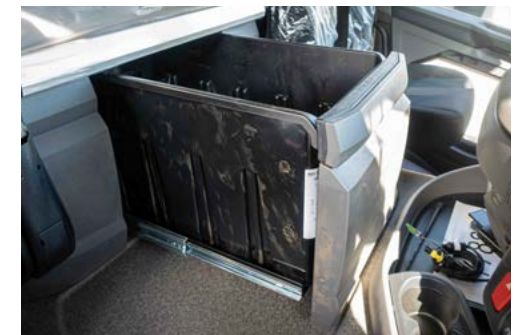
Fitted with digital (smart) VDO DTCO tachograph with Global Navigation satellite System (GNSS) receiver and dedicated short-range communications (DSRC) unit. DAF Luxury Plus Infotainment System – additional 10.1 inch touch screen display with audio and infotainment functionality, including tracking navigation.

An FM/DAB/DAB+ radio is integrated in the system as well as streaming functionalities via USB and Bluetooth.

Luxury speaker system – two bass speakers, two tweeters and full range frequency speaker.

Driver performance assistant (DPA) information is shown on 5” colour TFT display in instrument panel.

ECAS remote control to activate normal driving height, raise/lower the rear axle and to stop adjustment.



## Chassis:

Wheelbase is 5,700 mm with 2,000 mm overhang. Chassis is 310 mm x 7 mm steel with full length reinforcement. Horizontal exhaust discharge at the side of DPF/SCR unit via low exhaust diffuser. Exhaust discharged to the right hand side.

Camera at the rear of the vehicle for rear view. Camera images will be shown on the additional display in the dashboard wing belonging to the DAF Infotainment System.

EAS unit behind the 2nd front axle at the right hand side of the chassis. Horizontal battery box and 45 L AdBlue tank below battery box at the left hand side. 340 L aluminium water tank at the right hand side.

- Front & rear underrun protection according to EU directive 2000/40/EEC.
- Rear lights LED
- Steel air tanks
- Spray suppression in the mudguards according to directive 91/226/EEC.



## Brake System:

Features ventilated disc brakes front and rear. Dual circuit air system with electronic control (EBS). Twin cylinder air compressor with heated dryer and economy mode.

Fitted with MX engine brake – hydraulically operated compression brake assembly integrated in the valve rocker group. Works simultaneously with the exhaust brake. Pneumatic park brake control. Spring brake cylinder on the 2nd axle of the rear tandem axle.

## Axles Suspension:

Front axle 163N, 100 mm vertical offset. Parabolic leaf suspension with shock absorbers and stabiliser - Max load 2x 8.0 ton. Trailing axle load 8.0 t. Axle load limiter 11.5 t.

Driven rear axle and non-driven steered trailing rear axle with electronically controlled suspension. Driven rear axle type SR1344 with single reduction and 4 air bellows.

Non-driven steered trailing axle with 2 air bellows. Max group load 20.0 tonnes. Parabolic front suspension, regular driving height conditions.

Automatic control to lift the leading and/or trailing rear axles when the axle load on the driven axle permits lifting. The system operates at a vehicle speed as of 4 km/h.



## Wheels & Tyres:

- Front axles tyre size 315/60R22.5 wheels 22.5 x 9.00
- Driven rear axles the same
- Tyres premium make
- Steel disc wheels in silver grey
- Wheel protection rings with open centre section in silver-grey RAL 9006
- On/off road application

## Electrical Power Supply:

Alternator 130 A, Batteries 2 X 175 aH

## Power Take Off (PTO):

Double PTO type N./10bc mounted on the automated gearbox. Topside gear ratio 37/30 for direct pump drive. Bottom side gear ratio 37/20 with flange connection.

## GVC & GCM:

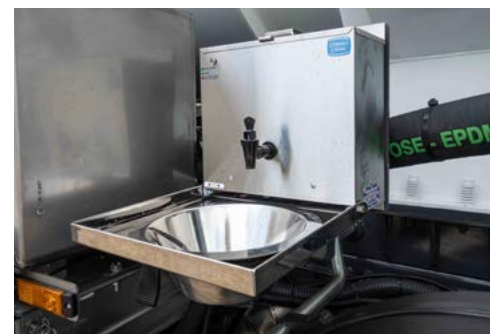
Chassis weight related technical GVM max 35,000 kg  
Driveline related max GCM 44,000 kg class 2.

## Warranty:

2 year warranty on chassis and 3rd year on driveline. This takes care of all warrantable repairs on the vehicle for two years and on the driveline for a third year together with associated breakdown coverage.

## Service & Maintenance:

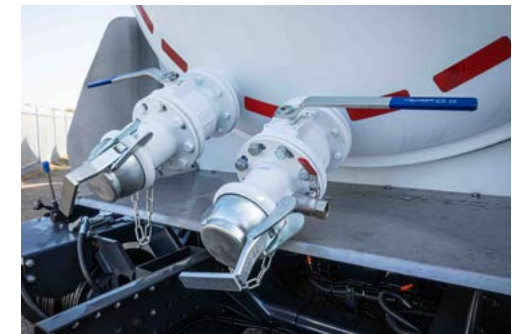
Two options are available at additional monthly cost,  
Option 1) Compliance package  
Option 2) Full R&M Package  
Please ask for a full details or a monthly cost.





## Pressure Vacuum Tank:

- Shape: Cylindrical shaped tank with external stiffening 50 x 10 flat rings.
- Material: Carbon steel to specification BS EN10025 S275.
- Specific Gravity: 1.00.
- Nominal Capacity:  $\pm$  4,200 IG or maximum to suit vehicle GVW.
- Baffles: 2 x anti-surge cut dish baffles.
- Wall Thickness:  $\pm$  5 mm.
- Head Thickness:  $\pm$  6 mm.
- Working Pressure: -0.9 bar vacuum and 1 bar over pressure
- Mountings: Fixed mounting with rubber and springs, including full mild steel sub-frame.
- Fall over length: Approx. 2 degrees slope rearwards.
- PRV: Tank-top PRV.
- Front Dish: Torispherical dish and flange.
- Rear Dish: Hydraulically operated torispherical door.
- Door Clamps: Hydraulically operated door clamps with controls on NS.
- Division: 1 x fixed division with bolted man access.
- Compartment split ratio – 4,000 gallons dirty / 200 gallons water.
- Manhole: 1 x 500 mm diameter tank top hole with access ladder and local platform.
- Waste Sight Glass: 3" diameter acrylic sight tube (cranked design), 1 x isolation valve with rodding cap.
- Water Sight Glass: 2" diameter acrylic sight tube.



## Valves:

- Inlet Valve: 4" lever operated Molex ball valve with internal stack pipe and wear plate
- Inlet Connection: 4" female Bauer with blank cap
- Inlet Position: In rear door
- Outlet Valve: 4" lever operated Molex ball valve
- Outlet Connection: 4" female Bauer with blank cap
- Outlet Position: In rear door
- Breaker Valves: 1" breaker valves fitted to both inlet & outlet connections
- Travel Valve: 2.5" air operated butterfly valve linked to PTO
- Vent Valve: 2.5" air operated butterfly valve

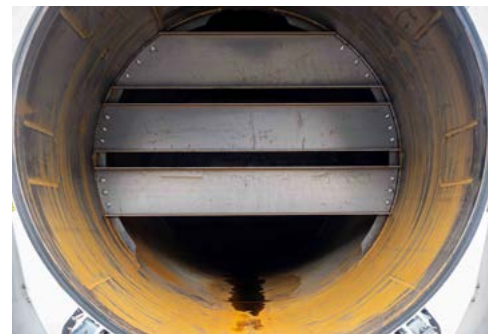


## Vacuum System:

- Pump: Air cooled vacuum pump Jurop RV360
- Flow: Free air capacity  $\pm 360$  cfm
- Pipework: Mild steel pipe work & rubber hose
- Primary Cut Out: Primary cut out with float ball located in the sludge compartment
- Secondary Cut Out: Overspill tank incorporating secondary cut out with float ball
- Suction Strainer: Suction line from overspill tank to vacuum pump fitted with grit strainer
- Changeover Valve: Pneumatic operation combined vacuum / pressure changeover valve
- Line Vent Valve: 1.5" auto line vent valve
- Gauges: Vacuum / pressure gauge mounted nearside
- Line Relief Valves: 1 x line pressure relief valve
- 1 x line vacuum relief valve
- Exhaust: System de-oiler with combined exhaust silencer.

## Jetting System:

- Water Intake: 2.5" layflat water fill hose c/w hydrant fitting. Storage basket mounted on NS.
- Jetting Pump: Speck NP25/50-150 high pressure pump.
- Max Performance:  $\pm 10$  gpm at 2,000 psi.
- Hose Reel: Hydraulically operated reel mounted rear NS with 30 m x 0.5" HP hose.
- System Control: Bypass unloader valve.
- Protection: Automatic low-water warning & auto-dump circuit.
- Water Filter: Suction side grit strainer.
- Frost Protection: Air purge system fitted.
- Safety: Emergency engine stop button on main rear control panel.
- Controls: Pump controls on the main rear control panel.
- Other Equipment: 1 x hand lance with fan nozzle.



## Storage:

- Hose Storage: 4,000 mm length hose tray both sides (solid base, open top with straps). Tank protector strips along the rear side hose trays.
- Toolbox: 1 x stainless steel toolbox minimum 800 mm width.
- Other Storage: 1 x galvanised mild steel mesh coupling cage with lid mounted at rear
- 1 x cone holder with capacity for 6 of 450 mm cones (pole only, no top disc).

## Lighting & Electrical:

- Marker Lamps: LED end outline marker lamps
- Working Lamps: 2 x LED work lamps located on rear dish, NS and OS
- Beacons: 2 x LED amber beacons mounted on rear dish

## Ancillary Items:

- Side Guards: Type approved aluminium side guards fitted
- Rear Under-Run: Type approved RUPS fitted
- Mud Wings: Plastic mud wings fitted to all rear axles
- Rear Splash Tray: Splash tray profiled around rear door & clamps
- Hand Wash: 1 x Teal 24 V stainless steel hand wash unit

## Painting:

- Tank Internal: No treatment – self colour.
- Tank External: Shotblast – SA 2.5.
- Primer – 2 pack epoxy.
- Finish – 2 pack high build acrylic in single solid colour – WHITE to match cab.
- Conspic Markings: Conspicuity markings in accordance to UN ECE Reg 48 SI 2009 No 3220.



## Storage:

- PESR: Approval to Pressure Equipment Safety Regulations 2016 – UKCA marked
- Quality Assurance: Independently monitored by notified body for conformity assessment. Hydrostatic test to 1.5 bar (23 psi) / full vacuum
- Operating Pressure: -0.9 bar vacuum and 1 bar pressure
- Certificates:
  - Declaration of Conformity PER / PED 2014/68/EU
  - Declaration of Conformity to UK Machinery Safety regulations SI 2008 no. 1597
  - Certificate of Hydraulic Test
  - Certificate of Noise Emission Measured / Guaranteed Power Level
  - Vehicle Weight Ticket Supplied
- PER / PED: To comply with The Pressure Systems Regulations SI 1999 No.2001 as amended by SI2002:1267 Directive No PED 97/23/EC
- Labels: Safety labels are fitted to vehicle as required
- Handbook: Operator handbook supplied.
- Commissioning: One day vehicle commissions instruction
- Data Plate: Tank data plate (CE marked) as required by SI 2000 no. 128 reg 5(4).

## Warranty:

- One year warranty on the body – conditions apply, please see T&Cs
- Please note that, in some operational circumstances, it is possible that the GVW or individual axle loading of this vehicle could be exceeded.